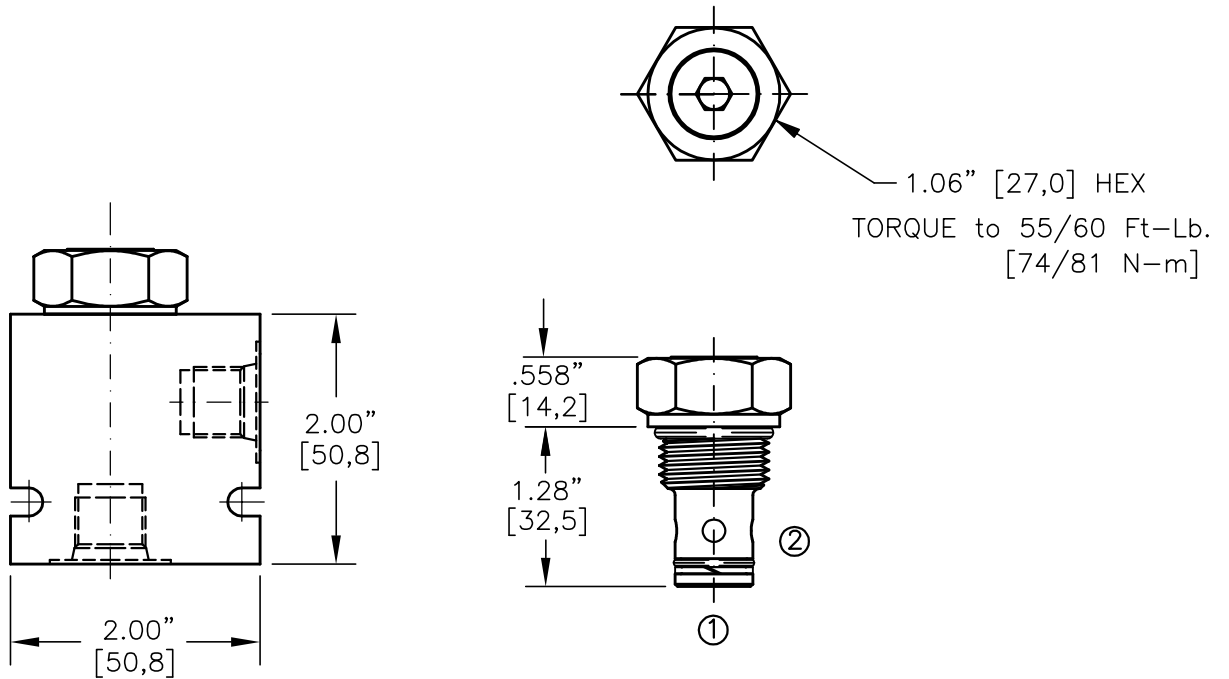
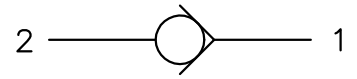
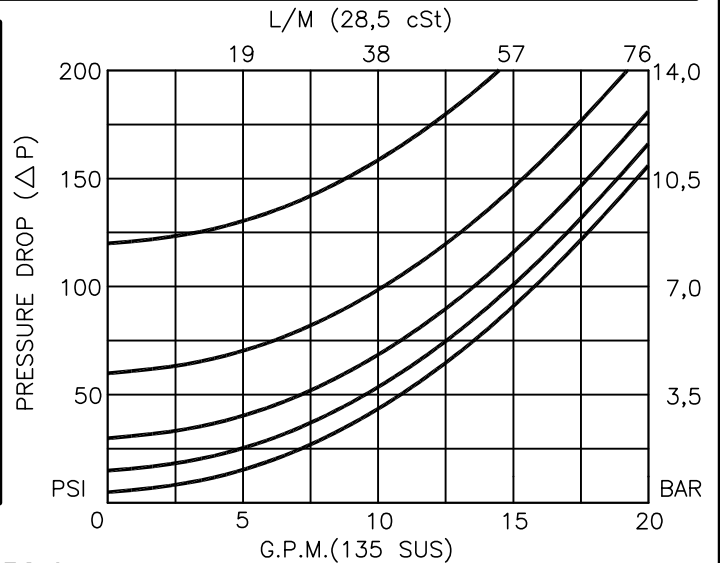
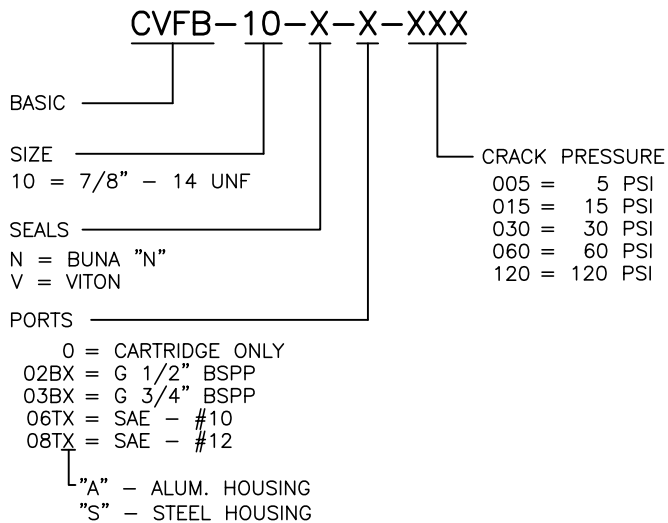




# CHECK VALVE FORWARD GUIDED BALL



FOR ALUMINUM OR STEEL VALVE HOUSING CONFIGURATIONS SEE PAGE 0-012.1





## CHECK VALVE FORWARD GUIDED BALL

### DESCRIPTION

This unit is a SCREW IN, cartridge type, guided ball, hydraulic check valve, for use as a blocking or load holding device for high pressure applications.

### OPERATIONS

This valve allows free flow from port 1 to port 2 and blocks flow from port 2 to port 1 for holding a load.

### FEATURES AND BENEFITS

Wide selection of bias springs allows flexibility for back-pressure application.

All external parts are zinc plated for longer life against the elements.  
All cartridge valves are 100% functionally tested.  
Industry common cavity.

### SPECIFICATIONS

OPERATING PRESSURE: 5,000 PSI [350 Bar]

PROOF PRESSURE: 10,000 PSI [700 Bar]

FLOW: 18.0 GPM [68 l/m] nominal. See performance chart.

INTERNAL LEAKAGE: 5 drops per minute maximum @ 5,000 PSI [350 Bar]

VALVE HOUSINGS: 2500 PSI [175 Bar] = Aluminum - Anodized.

5000 PSI [350 Bar] = Steel - Unplated.

OPERATING TEMPERATURE: -40° to +250° F. [-40° to +120° C.]

OPERATING MEDIA: All general purpose hydraulic fluids such as  
MIL-H-5606, SAE-#10, SAE-#20, etc.

INSTALLATION: No restrictions.

SEAL KIT: SKN-1021 Buna "N"

SKV-1021 Viton

WEIGHT: .25 lb [.12 kg] cartridge only.

VALVE CAVITY: #C1020, See Page 0-012.0.